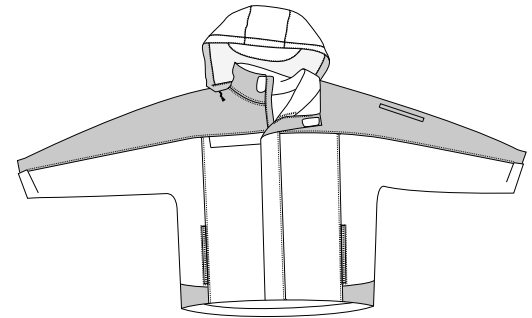
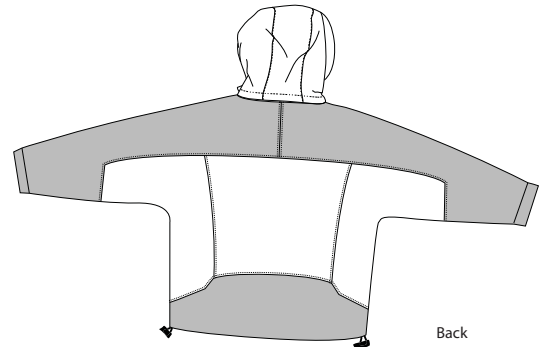


Nootka Jacket

PORT AUTHORITY®



Front



Back

J792

- * 100% Ripstop nylon shell w/Taslan nylon accents * 1500mm waterproof rating
- * Seam-sealed for added waterproofing * 2-ounce polyfill insulation in body
- * 3-ounce polyfill in sleeves * 100% polyester Sherpa fleece lined body
- * Nylon lined sleeves * Zip-off hood * 4 zippered pockets * Drop tail * Storm flap
- * Port Pocket™ engineering for easy embroidery accents

Care Instructions:
Machine wash cold. Do not dry clean. Do not iron. Do not bleach.
Tumble dry low.

Finished Measurements in Inches								
Size	XS	S	M	L	XL	2XL	3X	4X
Length	28	28.5	29	30	31	32	32.5	33
Chest	44	48	51	54	57	60	63	66
Sleeve	32	34	36	37	38	38.5	39	39.5
Sweep	44	48	51	54	57	60	63	66
Areas for Decoration	L/R Chest			Port Pocket™				

Chest width measured 1" below arm hole. Body length measured from back neck seam to hem.
Sleeve length measured from center back seam to hem.

Colors	
	Black/Black
	Bright Pistachio/Graphite
	Regatta Blue/Navy
	Cadmium Orange/Graphite

Please Note:
Colors shown are approximate and for reference only. For closest match see PMS colors, or for exact match, returnable samples and grommeted samples are available.

Color Chart				
Jacket Colors	Black	Bright Pistachio	Cadmium Orange	Regatta Blue
Textile PMS	19-4305 TC	16-0435 TC	16-1350 TC	18-3921 TC
General PMS	433 C	7495 C	7413 C	648 C
Accent Color	Black	Graphite	Navy	
Textile PMS	19-4305 TC	18-0201 TC	19-4025TC	
General PMS	433 C	425 C	533C	